

Detached Townhome

Kittredge Crossings in Ramsey

# The ELMCREST

3 Bedrooms | 2.5 Baths | 2 Garage Bays | 1,737 fsf | Slab-on-grade

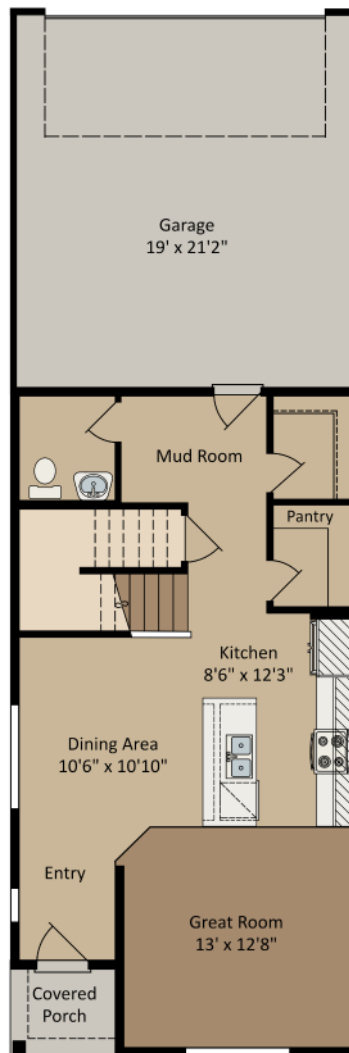


Elevation A

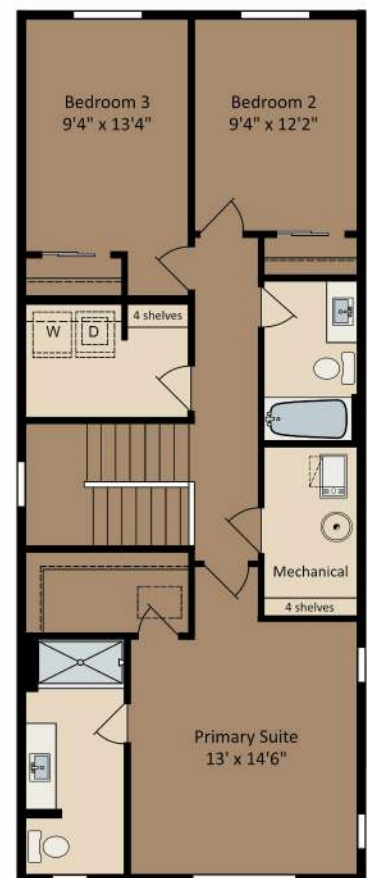


Elevation B

## MAIN LEVEL



## UPPER LEVEL



**CENTRA HOMES** LLC

[CentraHomes.com](https://CentraHomes.com)



Seller reserves the right to make changes or modifications to plans, specifications, materials, features and colors without notice. Plans and landscaping and elevation renderings are artist's concepts, are not to scale and may not accurately depict the homes or home sites as they are built. Illustrations may depict options and features that are not standard on all homes. Optional features may be included at additional cost and are subject to construction schedule deadlines. All references to square footage are approximate and may vary with elevations. Dimensions and square footage calculations are made using architectural measurements. Exterior treatments, window locations and room configurations may vary with elevation. Please ask Sales Counselor for complete details. Copyright 2024, Centra Homes, LLC. MN Builder License #BC638832. Effective 7/25/24. Equal Housing Opportunity.