

The MAPLE

3 - 5 Beds | 2 - 3 Baths | 3 Garage Bays | 1,345 - 2,404 fsf



Elevation A (1350 - 2404 fsf)



Elevation B (1345 - 2399 fsf)



Elevation D (1345 - 2399 fsf)

FEATURES

Covered Entry

Kitchen Island

Vaulted Ceiling in Great Room

Primary Suite with Walk-in Closet

Walk-in Closet in All Main Level
Bedrooms

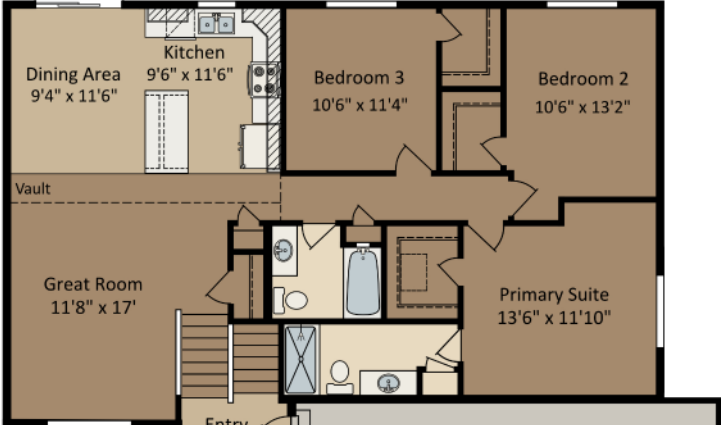
Three-Bay Garage

CENTRA HOMES LLC

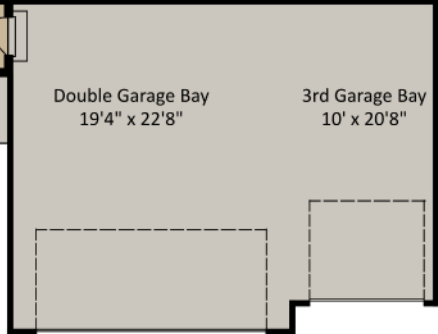
CentraHomes.com

The MAPLE

Main Level
Elevation A



Unfinished Lower Level



Main Level
Elevation B



Main Level
Elevation D

